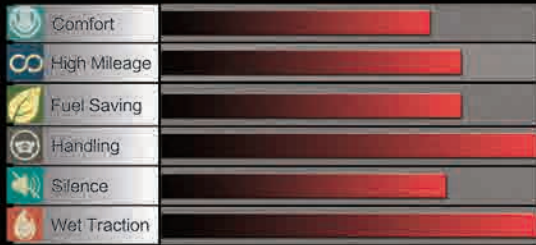




# RUN FLAT TIRE

## FR01

SPECIAL FOR MIDDLE AND HIGH-END CAR



Due to the application of the side wall strengthening technology, when the tires lose air, it can also give the vehicle strong support to ensure the safety of driving.

Ordinary tires are completely supported by air pressure. When the tires lose air, the wheels will have severe friction with the tires and be damaged, which will bring serious safety risks to the vehicles.



Adopt solid rib design, improve the turning performance of high speed driving, improve the driving stability and safety.



Adopt asymmetric four main groove design. Superior drainage performance, improve wetland control performance, excellent driving performance on wet slippery road in rainy days.



Design of pitch width. Uniform pitch size, long-term static performance can be maintained to ensure consistent wear of new and after use tires.

SIZE	Load Index	Speed Rating	Standard Rim	Section Width (mm)	Overall Diameter (mm)	Max.load		Max.pressure	
						kg	lbs	kpa	psi
225/45ZRF17	91	W	7.5J	225	634	615	1356	300	44
225/50RF17	94	W	7.0J	233	658	670	1477	300	44
225/55RF17	97	W	7.0J	233	680	730	1609	300	44
235/50RF18	97	W	7.5J	245	693	730	1609	300	44
235/55RF18	100	V	7.5J	245	715	800	1764	300	44
245/40ZRF18	93	W	8.5J	248	653	650	1433	300	44
245/45ZRF18	96	W	8.0J	243	677	710	1565	300	44
245/50RF18	100	W	7.5J	253	703	800	1764	300	44
255/55RF18	105	V	8.0J	265	737	925	2039	300	44
235/55RF19	101	V	7.5J	245	741	825	1819	300	44
245/45ZRF19	98	W	8.0J	243	703	750	1653	300	44
255/50RF19	103	W	8.0J	265	739	875	1929	300	44
275/40ZRF19	101	W	9.5J	278	703	825	1819	300	44





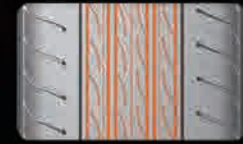
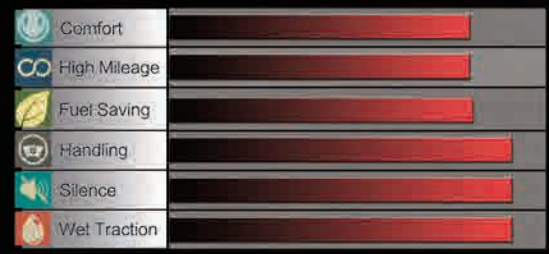
UHP

UHP

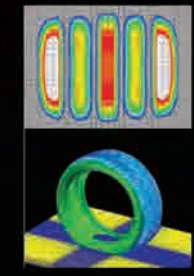


# BH19

SPECIAL FOR SPORT CAR



Optimal design of pattern order with changing pitches efficiently decreases vibrate and noise



Use the leading method FEA, Finite Element Analysis, and get a optimized pitch arrangement and displacement.



Densely distributed blocks efficiently offset noises made by air emission in the grooves.



Four longitudinal groove design to ensure good drainage performance on wet surface



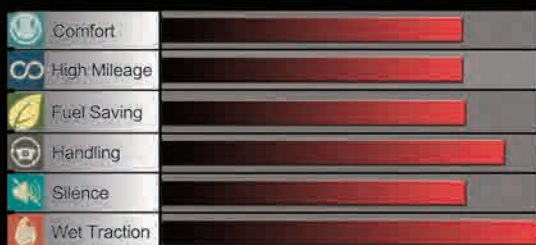
Widen central Pattern rib to ensure the handling at the time of intense driving.

SIZE	Load Index	Speed Rating	Standard Rim	Section Width (mm)	Overall Diameter (mm)	Max.load		Max.pressure	
						kg	lbs	kpa	psi
225/35ZR20	90	W	8.0J	230	666	600	1323	340	49
255/35ZR20	97	W	9.0J	260	686	730	1609	340	49
275/40ZR20	106	W	9.5J	278	728	950	2094	340	49
245/30ZR22	92	W	8.5J	248	707	630	1389	340	49
265/35R22	102	V	9.5J	271	745	850	1874	340	49
305/40R22	114	V	11.0J	313	803	1180	2601	340	49
305/45R22	118	V	10.0J	303	833	1320	2910	340	49



# VANTAGE H-7

SPECIAL FOR MIDDLE AND HIGH-END CAR



Asymmetric pattern, big shoulder block, excellent control on dry road, wide grooves helps excellent water drainage.



Wider lateral grooves design helps improve the performance of drainage and wet grip.



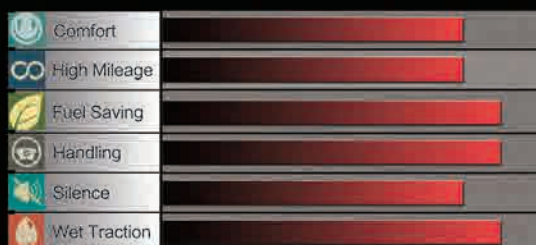
Widen the central Pattern block to ensure the handling at the time of intense driving.

SIZE	Load Index	Speed Rating	Standard Rim	Section Width (mm)	Overall Diameter (mm)	Max. load		Max. pressure	
						kg	lbs	kpa	psi
175/65R14	82	H	5.0J	177	584	475	1047	300	44
175/65R14	86	T	5.0J	177	584	530	1168	340	49
195/60R15	88	V	5.0J	201	615	560	1235	300	44
195/65R15	91	H	5.0J	201	635	615	1356	300	44
195/65R15	95	H	5.0J	201	635	690	1521	340	49
205/65R15	94	H	5.0J	209	647	670	1477	300	44
195/55R16	87	V	5.0J	201	620	545	1201	300	44
195/60R16	89	H	5.0J	201	640	580	1279	300	44
205/45R16	87	V	5.0J	206	590	545	1201	340	49
205/55R16	91	V	5.0J	214	632	615	1356	300	44
205/55R16	91	W	5.0J	214	632	615	1356	300	44
205/60R16	92	H	5.0J	209	652	630	1389	300	44
215/55R16	97	W	5.0J	226	642	730	1611	340	49
215/60R16	95	H	5.0J	221	664	690	1521	300	44
215/65R16	98	H	5.0J	221	686	750	1654	300	44
205/55R17	94	V	5.0J	214	658	670	1477	340	49
215/50R17	95	W	5.0J	226	648	690	1521	340	49
215/60R17	96	H	5.0J	221	690	710	1565	300	44
225/45ZR17	91	W	5.0J	225	634	615	1356	300	44
245/45R17	99	W	5.0J	243	652	775	1708	340	49
215/50R18	92	W	5.0J	226	673	630	1389	300	44
215/55R18	99	H	5.0J	226	693	775	1708	340	49
225/40ZR18	92	W	5.0J	230	637	630	1389	340	49
225/50R18	99	W	5.0J	233	683	775	1709	340	49
225/55R18	98	H	5.0J	233	705	750	1653	300	44
225/60R18	100	H	5.0J	228	727	800	1763	300	44
235/45ZR18	94	W	5.0J	236	669	670	1477	300	44
235/50R18	97	V	5.0J	245	693	730	1609	300	44
235/55R18	100	V	5.0J	245	715	800	1763	300	44
245/50R18	104	V	5.0J	253	703	900	1984	340	49
255/45R18	103	W	5.0J	255	687	875	1929	340	49
225/45R19	96	W	5.0J	225	685	710	1565	340	49
235/35R19	91	W	5.0J	241	647	615	1356	340	49
235/50R19	99	V	5.0J	245	719	775	1708	300	44
245/45R19	102	W	5.0J	243	703	850	1874	340	49
255/40R19	100	W	5.0J	260	687	800	1764	340	49
255/45R19	104	W	5.0J	255	713	900	1984	340	49
245/35ZR20	95	W	5.0J	248	680	690	1521	340	49



# VANTAGE H-8

SPECIAL FOR HIGH-END CAR



Asymmetric pattern design provide a strong grip and confident maneuvering and tread even wearing during turning.



Four wide longitudinal groove design and wide contact patch helps to deliver a high speed performance and excellent water drainage.

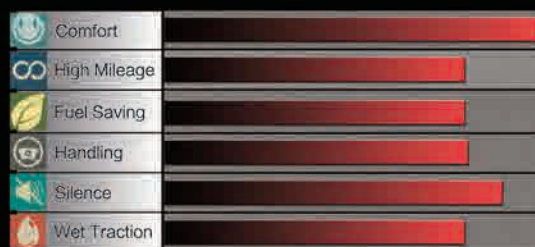


Angular sipes help reduce noise and provide comfortable riding.

SIZE	Load Index	Speed Rating	Standard Rim	Section Width (mm)	Overall Diameter (mm)	Max.load		Max.pressure	
						kg	lbs	kpa	psi
185/55R15	82	V	6J	194	585	475	1047	350	51
195/50R15	82	V	6J	201	577	475	1047	350	51
195/55R15	85	V	6J	201	595	515	1135	350	51
195/50R16	88	V	6J	201	602	560	1235	340	49
205/50R16	87	V	6.5J	214	612	545	1201	350	51
215/55R16	97	W	7J	226	642	730	1609	340	50
225/55R16	95	W	7J	233	654	690	1521	350	51
205/40ZR17	84	W	7.5J	212	596	500	1102	350	51
205/50R17	93	W	6.5J	214	638	650	1433	340	50
215/40ZR17	87	W	7.5J	218	604	545	1201	350	51
215/45R17	91	W	7J	213	626	615	1356	340	50
215/55R17	98	W	7J	226	668	750	1653	340	50
225/45R17	91	W	7.5J	225	634	615	1356	350	51
225/50R17	98	W	7J	233	658	750	1653	340	50
225/55R17	101	W	7J	233	680	825	1819	340	49
235/45R17	97	W	8J	236	644	730	1609	340	50
235/50R17	96	W	7.5J	245	668	710	1565	350	51
235/55R17	99	W	7.5J	245	690	775	1709	350	51
215/35ZR18	84	W	7.5J	218	607	500	1102	350	51
225/40R18	92	W	8J	230	637	630	1389	340	50
225/45R18	95	W	7.5J	225	659	690	1521	350	51
235/40ZR18	95	W	8.5J	241	645	690	1521	350	51
245/40ZR18	97	W	8.5J	248	653	730	1609	350	51
245/45R18	100	W	8J	243	677	800	1764	350	51
245/35R20	95	W	8.5J	248	680	690	1521	340	50

# GENESYS 218

ECONOMIC CAR TYRE



Asymmetric pattern design provide a strong grip and confident maneuvering and tread even wearing during turning.



Four wide longitudinal groove design and wide contact patch helps to deliver a high speed performance and excellent water drainage.

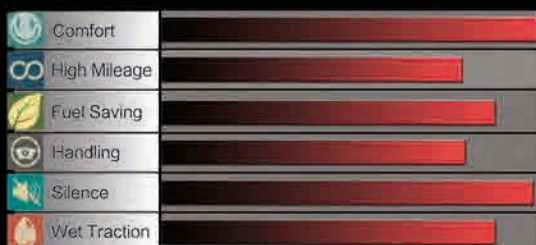


Angular sipes help reduce noise and provide comfortable riding.

SIZE	Load Index	Speed Rating	Standard Rim	Section Width (mm)	Overall Diameter (mm)	Max.load		Max.pressure	
						kg	lbs	kpa	psi
155/65R13	73	T	4.5J	157	532	365	805	300	44
155/70R13	75	T	4.5J	157	548	387	853	300	44
155/80R13	79	T	4.5J	157	578	437	963	300	44
165/65R13	77	T	5.0B	170	544	412	908	350	51
165/70R13	79	T	5.0B	170	562	437	963	350	51
175/60R13	77	T	5.0J	177	540	412	908	300	44
175/70R13	82	H	5.0B	177	576	475	1047	350	51
175/70R13 *wsw	82	T	5.0B	177	576	475	1047	300	44
185/70R13	86	T	5.0B	189	590	530	1168	350	51
165/65R14	79	H	5.0J	170	570	437	963	350	51
165/70R14	85	T	5.0J	170	588	515	1135	340	50
175/60R14	79	H	5.0J	177	566	437	963	300	44
175/65R14	82	H	5.0J	177	584	475	1047	350	51
175/70R14	84	T	5.0J	177	602	500	1102	350	51
185/60R14	82	H	5.5J	189	578	475	1047	350	51
185/65R14	86	H	5.5J	189	596	530	1168	350	51
185/70R14	88	T	5.5J	189	616	560	1235	350	51
195/70R14	91	T	6.0J	201	630	615	1356	350	51

# GENESYS 228

SPECIAL FOR MIDDLE-END CAR



Silent pitch arrangement, tread design of unequal pitch width, arrangement and displacement help provide experience of quiet driving and effectively reduce tire resonant noise.



Four wide longitudinal groove design and wide contact patch helps to deliver a high speed performance and excellent water drainage.



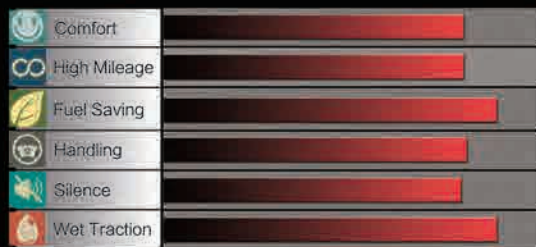
Wide central main rib design on tread center helps maintain a continuous and homalographic contact area for constant straight riding.

SIZE	Load Index	Speed Rating	Standard Rim	Section Width (mm)	Overall Diameter (mm)	Max.load		Max.pressure	
						kg	lbs	kpa	psi
195/60R14	86	H	6.0J	201	590	530	1168	350	51
205/60R14	88	H	6.0J	209	602	560	1235	300	44
205/70R14	93	T	6.0J	209	644	650	1433	300	44
185/60R15	84	H	5.5J	189	603	500	1102	350	51
185/65R15	88	H	5.5J	189	621	560	1235	350	51
195/60R15	88	V	6.0J	201	615	560	1235	350	51
195/65R15	95	H	6.0J	201	635	690	1521	340	50
205/60R15	91	H	6.0J	209	627	615	1356	350	51
205/65R15	94	H	6.0J	209	647	670	1477	350	51
205/70R15	96	T	6.0J	209	669	710	1565	300	44
215/60R15	94	H	6.5J	221	639	670	1477	350	51
215/65R15	96	H	6.5J	221	661	710	1565	350	51
215/70R15	98	T	6.5J	221	683	750	1653	300	44
205/55R16	91	W	6.5J	214	632	615	1356	350	51
205/60R16	96	H	6.0J	209	652	710	1565	340	50
205/65R16	95	H	6.0J	209	672	690	1521	300	44
215/60R16	99	H	6.5J	221	664	775	1709	340	50
215/65R16	98	H	6.5J	221	686	750	1653	350	51
225/60R16	98	V	6.5J	228	676	750	1653	350	51
235/60R16	100	H	7.0J	240	688	800	1764	300	44
225/60R17	99	H	6.5J	228	702	775	1709	350	51



# GENESYS 208

ECONOMIC CAR TYRE



Four wider main grooves, much steel, improves wet grip on rainy days.



Shoulder reinforcing rib design to ensure handling performance as well as reducing noise.



Special for enabling high tire pressure and narrow tread design and low rolling resistance structure, reduce energy loss.

SIZE	Load Index	Speed Rating	Standard Rim	Section Width (mm)	Overall Diameter (mm)	Max. load		Max. pressure	
						kg	lbs	kpa	psi
175/70R13	82	T	5.0J	177	576	475	1047	300	44
185/60R14	82	H	5.5J	189	578	475	1047	300	44
155/70R12	73	T	4.5J	157	523	365	805	300	44
185/70R14	88	T	5.5J	189	616	560	1234	300	44

## BP18

SPECIAL FOR MIDDLE-END CAR



The closed shoulder seam reduces the impact noise of the tire and also prevents irregular wear.



Small decorative shoulder pattern designed to absorb vibration and reduce noise.



The reinforcing rib is designed to enhance the overall rigidity of the pattern to ensure high speed safety.

SIZE	Load Index	Speed Rating	Standard Rim	Section Width (mm)	Overall Diameter (mm)	Max.load		Max.pressure	
						kg	lbs	kpa	psi
185/60R15	84	H	5.5J	189	603	500	1102	300	44
185/65R15	88	H	5.5J	189	621	560	1235	300	44
195/55R15	85	H	6.0J	201	595	515	1135	300	44
195/60R15	88	V	6.0J	201	615	560	1235	300	44
195/65R15	91	H	6.0J	201	635	615	1356	300	44
205/65R15	94	H	6.0J	209	647	670	1477	300	44
195/55R16	87	V	6.0J	201	620	545	1201	300	44
195/60R16	89	H	6.0J	201	640	580	1279	300	44
205/55R16	91	V	6.5J	214	632	615	1356	300	44
205/60R16	92	H	6.0J	209	652	630	1389	300	44
215/55R16	97	W	7.0J	226	642	730	1609	340	49
215/60R16	95	H	6.5J	221	664	690	1521	300	44
215/65R16	98	H	6.5J	221	686	750	1654	300	44
225/55R16	95	W	7.0J	233	654	690	1521	300	44
235/60R16	100	V	7.0J	240	688	800	1764	300	44
215/50R17	95	W	7.0J	226	648	690	1521	340	49
215/55R17	98	W	7.0J	226	668	750	1653	340	49
225/55R17	101	W	7.0J	233	680	825	1819	340	49
215/55R18	99	H	7.0J	226	693	775	1709	340	49

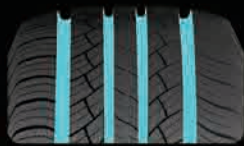


# SASQUA H/T

SUV TYRE

SUVLTR

SUVLTR



With 4-U-shaped groove design, the excellent water draining performance and gripping power on wet assured.



Multiple small tread pattern design improves driving comfort.



The big tread blocks on shoulder enhance tire strength so that the wear-resistance ability assured and uneven wearing avoided.

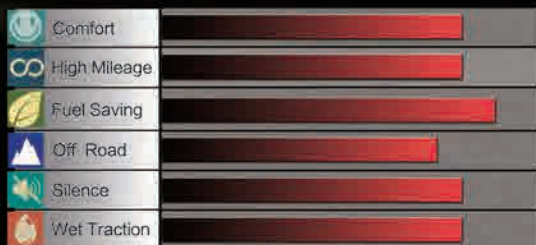
SIZE	Load Index	Speed Rating	Standard Rim	Section Width (mm)	Overall Diameter (mm)	Max.load		Max.pressure	
						kg	lbs	kpa	psi
LT265/75R16	123/120	S	7.5J	267	804	1550/1400	3415/3085	550	80
LT245/75R17	121/118	S	7J	248	800	1450/1320	3195/2910	550	80
LT265/70R17	121/118	S	8J	272	804	1450/1320	3195/2910	550	80
P215/75R15	100	T	6.0J	216	703	800	1764	300	44
P225/70R15	100	H	6.5J	228	697	800	1764	300	44
P225/75R15	102	T	6.0J	223	719	850	1874	300	44
P235/75R15	105	T	6.5J	235	733	920	2028	300	44
P215/70R16	100	H	6.5J	221	708	800	1764	350	51
P225/70R16	103	H	6.5J	228	722	875	1929	350	51
P235/70R16	106	H	7.0J	240	736	950	2094	350	51
P245/70R16	107	H	7.0J	248	750	975	2149	350	51
P245/75R16	111	T	7.0J	248	774	1090	2403	350	51
P255/70R16	111	H	7.5J	260	764	1090	2403	350	51
P265/70R16	112	H	8.0J	272	778	1120	2469	350	51
P265/75R16	114	T	7.5J	267	804	1180	2601	350	51
P235/65R17	104	H	7.0J	240	738	900	1984	350	51
P245/65R17	107	H	7.0J	248	750	975	2149	350	51
P245/70R17	110	H	7.0J	248	776	1060	2337	350	51
P265/65R17	112	H	8.0J	272	776	1120	2469	350	51
P265/70R17	115	H	8.0J	272	804	1215	2679	350	51
P235/60R18	107	H	7.0J	240	739	975	2149	340	50
P245/60R18	105	H	7.0J	248	751	925	2039	300	44
P255/55R18	105	H	8.0J	265	737	925	2039	300	44
P245/55R19	103	H	7.5J	253	753	875	1929	300	44
P255/50R19	107	H	8.0J	265	739	975	2149	340	49
P255/55R19	107	H	8.0J	265	763	975	2149	300	44
P275/45R20	110	V	8.0J	273	756	1060	2337	340	50
P275/55R20	117	V	8.0J	284	810	1285	2833	340	50



**BV11+**  
SUV TYRE

SUVLTR

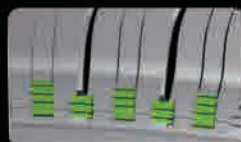
SUVLTR



Adopt zigzag main groove design. Four zigzag wide longitudinal grooves improve the drainage and grasping performance in rainy days.



Adopt reinforcing rib design, reinforcing rib design increases the rigidity of the pattern block and has the function of cleaning stone.



The tread end adopts step design to increase the sidewall anti-scratch and anti-friction function.

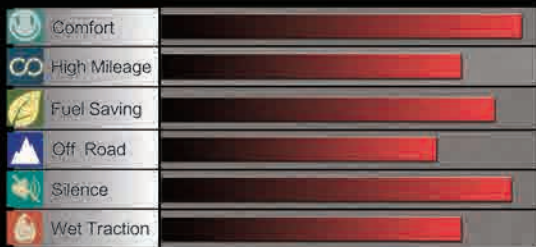
SIZE	Load Index	Speed Rating	Standard Rim	Section Width (mm)	Overall Diameter (mm)	Max.load		Max.pressure	
						kg	lbs	kpa	psi
P215/60R17	96	H	6.5J	221	690	710	1565	300	44
P215/65R17	99	H	6.5J	221	712	775	1709	300	44
P235/55R18	104	V	7.5J	245	715	900	1984	340	49
P235/65R18	106	H	7.0J	240	763	950	2094	300	44
P265/60R18	110	H	8.0J	272	775	1060	2336	300	44
P265/70R18	116	H	8.0J	272	829	1250	2756	300	44
P285/60R18	116	H	8.5J	292	799	1250	2756	300	44
P225/55R19	99	V	7.0J	233	731	775	1709	300	44
P235/55R19	101	V	7.5J	245	741	825	1819	300	44
P245/55R19	103	H	7.5J	253	753	875	1929	300	44
P235/55R20	105	H	7.5J	245	766	925	2039	340	49
P245/45R20	103	V	8.0J	243	728	875	1929	340	49
P255/45R20	105	V	8.5J	255	738	925	2039	340	49
P255/50R20	109	V	8.0J	265	764	1030	2271	340	49
P265/50R20	111	V	8.5J	277	774	1090	2403	340	49
P285/50R20	112	H	9.0J	297	794	1120	2469	300	44
P255/45R21	102	V	8.5J	255	763	850	1874	300	44
P275/45R21	110	V	9.0J	273	781	1060	2337	340	49
P275/40R22	107	V	9.5J	278	779	975	2150	340	49
P285/45R19	111	V	9.5J	285	739	1090	2403	340	49
P245/50R20	102	V	7.5J	253	754	850	1874	300	45
P235/45R20	100	V	8.0J	236	720	800	1764	340	49
P255/55R20	110	V	8.0J	265	788	1060	2337	340	49



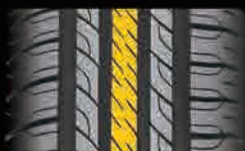
# VANTAGE H-6

SUV TYRE

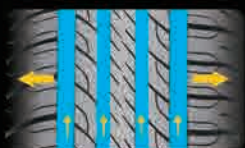
SUVLTR



Variable pitch pattern ensures low resonance noise and outstanding riding comfort.



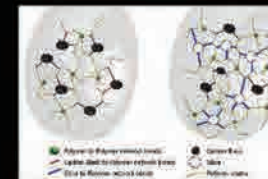
Continuous solid center rib providing stable contacting area enhance steering stability.



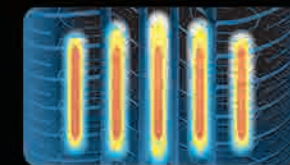
Four deepened circumferential tread grooves and open shoulder grooves provide excellent water evacuation performance and offer extraordinary behaviour on wet conditions.



SUVLTR



Environmental low rolling resistant compound significantly reduce rolling resistance guarantee high fuel efficiency.



The optimized tire outline design provides stable and bigger contacting area, ensuring good handling performance.

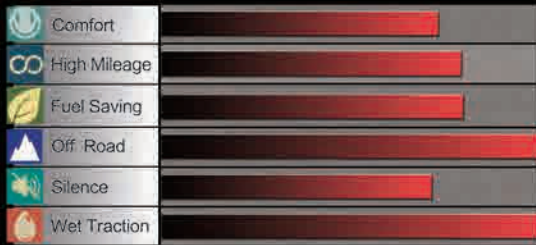
SIZE	Load Index	Speed Rating	Standard Rim	Section Width (mm)	Overall Diameter (mm)	Max.load		Max.pressure	
						kg	lbs	kpa	psi
225/65R17	102	H	6.5J	228	724	850	1875	300	44

# ESPARTA A/T

ALL TERRAIN TYRE

SUVLTR

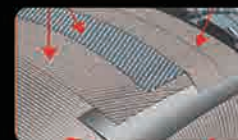
SUVLTR



Special Shoulder pattern block design, provide strong drive power and excellent off-road performance.



Special pattern design helps reduce profile creep strain on uneven road and strengthen contact patch lateral rigidity.



High-tensile steel wires plus nylon reinforced ply, excellent un-ti-piercing resistance.

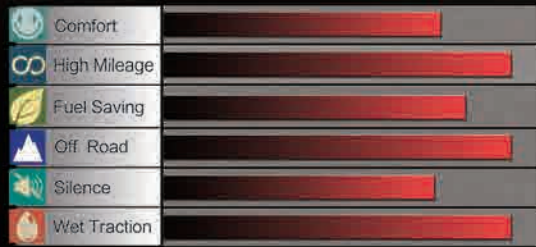
SIZE	PR	Load Index	Speed Rating	Standard Rim	Section Width (mm)	Overall Diameter (mm)	Max.load		Max.pressure	
							kg	lbs	kpa	psi
31*10.50R15LT	6	109	Q	8.5J	268	775	1030	2270	350	50
LT215/85R16	10	115/112	Q	6.0J	216	772	1215/1120	2680/2470	550	80
LT225/75R16	10	115/112	Q	6.0J	223	744	1215/1120	2680/2470	550	80
LT235/85R16	10	120/116	Q	6.5J	235	806	1400/1250	3085/2755	550	80
LT245/75R16	10	120/116	Q	7.0J	248	774	1400/1250	3085/2755	550	80



**BA80+**  
ALL TERRAIN TYRE

SUVLTR

SUVLTR



Deep pattern + High saturation in contact with the ground + mixed pattern design + Wear resistant compound, for much longer mileage



Special contour profile, 2% more contact area, improve the mileage and turning performance.



Special pattern design, avoid stone or other thing clamped in the grooves.

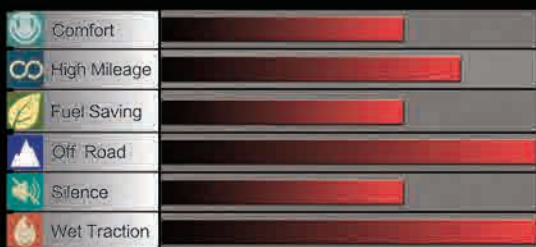
SIZE	PR	Load Index	Speed Rating	Standard Rim	Section Width (mm)	Overall Diameter (mm)	Max.load		Max.pressure	
							kg	lbs	kpa	psi
31*10.50R15LT	6PR	109	Q	8.5J	268	775	1030	2270	350	50
LT215/75R15		100	S	6.0J	216	703	800	1765	300	44
LT235/75R15	6PR	104/101	Q	6.5J	235	733	900/825	1985/1820	350	50
LT215/85R16	10PR	115/112	Q	6.0J	216	772	1215/1120	2680/2470	550	80
LT225/75R16	10PR	115/112	Q	6.0J	223	744	1215/1120	2680/2470	550	80
LT235/85R16	10PR	120/116	Q	6.5J	235	806	1380/1260	3042/2778	550	80
LT245/75R16	10PR	120/116	Q	7.0J	248	774	1380/1260	3042/2778	550	80
LT265/75R16	10PR	123/120	Q	7.5J	267	804	1550/1400	3415/3085	550	80
LT285/75R16	8PR	122/119	Q	8.0J	286	834	1500/1360	3305/3000	450	65
LT245/75R17	10PR	121/118	Q	7.0J	248	800	1450/1320	3195/2910	550	80
LT265/70R17	10PR	121/118	Q	8.0J	272	804	1450/1320	3195/2910	550	80
LT285/70R17	10PR	121/118	Q	8.5J	292	832	1450/1320	3195/2910	550	80
LT275/65R18	10PR	123/120	Q	8.0J	279	815	1550/1400	3415/3085	550	80
P215/75R15	6PR	100/97	S	6.0J	216	703	800/730	1765/1610	350	50
P255/70R15		108	S	7.5J	260	739	1000	2205	300	44
P215/70R16		100	S	6.5J	221	708	800	1764	300	44
P235/70R16		106	S	7.0J	240	736	950	2094	300	44
P245/70R16		107	S	7.0J	248	750	975	2149	300	44
P245/75R16		111	S	7.0J	248	774	1090	2403	300	44
P255/70R16		111	S	7.5J	260	764	1090	2403	300	44
P265/70R16		112	S	8.0J	272	778	1120	2469	300	44
P265/75R16		116	S	7.5J	267	804	1250	2756	300	44
P265/65R17		112	S	8.0J	272	776	1120	2469	300	44
P265/70R17		115	S	8.0J	272	804	1215	2678	300	44
P265/60R18		110	S	8.0J	272	775	1060	2337	300	44
P275/70R16		114	S	8.0J	279	792	1180	2601	300	44
P285/60R18		116	S	8.5J	292	799	1250	2756	300	44
P265/50R20		111	S	8.5J	277	774	1090	2403	340	49
P275/60R20		115	S	8.0J	279	838	1215	2679	300	44



**BM81**  
MUD TERRAIN TYRE

SUV/LTR

SUV/LTR



The balanced void ratio efficiently removes mud and dirt from the tread to provide continuous off-road traction.



The balanced void ratio efficiently removes mud and dirt from the tread to provide continuous off-road traction.

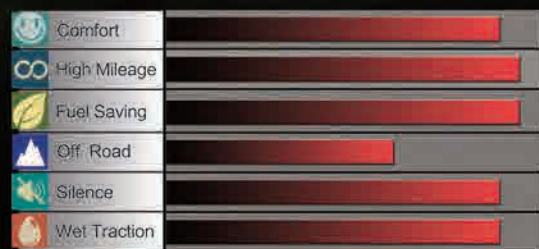


HALUDR mud terrain tire provide traction over various off-road terrain, whether it is dirt, rocks or mud.

SIZE	PR	Load Index	Speed Rating	Standard Rim	Section Width (mm)	Overall Diameter (mm)	Max.load		Max.pressure	
							kg	lbs	kpa	psi
31*10.50R15LT	6	109	Q	8.0J	268	775	1030	2271	350	50
LT235/75R15	6	104/101	Q	6.5J	235	733	900	1985	350	50
LT245/75R16	10	120/116	Q	7.0J	248	774	1380	3042	550	80
LT265/75R16	10	123/120	Q	7.5J	267	804	1550/1400	3417/3086	550	80
LT285/75R16	10	126/123	Q	8.0J	286	834	1700/1550	3750/3415	550	80
LT265/65R17	10	120/117	Q	8.0J	272	776	1400/1285	3085/2835	550	80
LT265/70R17	10	121/118	Q	8.0J	272	804	1450/1320	3195/2910	550	80
33*12.5R17LT	8	114	Q	10.0J	318	826	1180	2600	350	50
33*12.5R18LT	10	118	Q	10.0J	318	826	1320	2910	450	65
LT265/70R16	10	121/118	Q	8.0J	272	778	1450/1320	3195/2910	550	80

# BRAWN 2000

LIGHT TRUCK (VAN) TYRE



COMMERCIAL LTR

COMMERCIAL LTR



Three longitudinal "Z" groove design for excellent water drainage and good handling.



Special wear-resistant compound for much longer mileage, dramatically increase the economy.

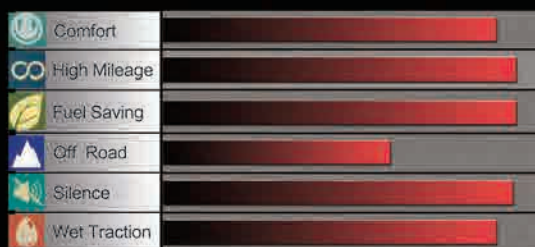


Wide tread and strong carcass, improve the loading capacity and high speed performance

SIZE	PR	Load Index	Speed Rating	Standard Rim	Section Width (mm)	Overall Diameter (mm)	Max.load		Max.pressure	
							kg	lbs	kpa	psi
185R14C	8	102/100	S	5.5J	188	650	850/800	1875/1765	450	65
195R14C	8	106/104	S	5.5J	198	666	950/900	2095/1985	450	65

# BRAWN BRO1

LIGHT TRUCK (VAN) TYRE



COMMERCIAL LTR



Three longitudinal “S” saw teeth groove design for excellent water drainage and good handling.



Deep pattern + High saturation in contact with the ground + mixed pattern design + Wear resistant compound, for much longer mileage.



Mixed pattern design for Shoulder, effectively reduce noise.

SIZE	PR	Load Index	Speed Rating	Standard Rim	Section Width (mm)	Overall Diameter (mm)	Max.load		Max.pressure	
							kg	lbs	kpa	psi
185R14C	8PR	102/100	R	5.5J	188	650	850/800	1875/1765	450	65
195R14C	8PR	106/104	R	5.5J	198	666	950/900	2095/1985	450	65
195R14C *wsw	8PR	106/104	R	5.5J	198	666	950/900	2095/1985	450	65
205R14C	8PR	109/107	R	6.0J	208	686	1030/975	2270/2150	450	65
185R15C	8PR	103/102	R	5.5J	188	674	875/850	1930/1875	450	65
195R15C	8PR	106/104	R	5.5J	198	690	950/900	2095/1985	450	65
195R15C *wsw	8PR	106/104	R	5.5J	198	690	950/900	2095/1985	450	65
215/75R14C	8PR	112/110	R	6.0J	216	678	1120/1060	2470/2335	475	69
195/70R15C	8PR	104/102	R	6.0J	201	655	900/850	1985/1875	450	65
205/70R15C	8PR	106/104	R	6.0J	209	669	950/900	2095/1985	450	65
215/70R15C	8PR	104/101	S	6.5J	221	683	900/825	1984/1819	450	65
225/70R15C	8PR	112/110	R	6.5J	228	697	1120/1060	2470/2335	450	65
185/75R16C	8PR	104/102	R	5.0J	184	684	900/850	1985/1875	475	69
195/65R16C	8PR	104/102	R	6.0J	201	660	900/850	1985/1875	475	69
195/75R16C	8PR	107/105	R	5.5J	196	698	975/925	2150/2040	475	69
205/65R16C	8PR	107/105	R	6.0J	209	672	975/925	2150/2040	475	69
215/65R16C	8PR	109/107	R	6.5J	221	686	1030/975	2270/2150	475	69
215/70R16C	6PR	108/106	R	6.5J	221	708	1000/950	2205/2094	375	54
215/75R16C	8PR	113/111	R	6.0J	216	728	1150/1090	2535/2405	475	69
225/65R16C	8PR	112/110	R	6.5J	228	698	1120/1060	2470/2335	475	69
225/75R16C	10PR	121/120	R	6.0J	223	744	1450/1400	3197/3086	575	83
235/65R16C	8PR	115/113	R	7.0J	240	712	1215/1150	2680/2540	475	69

COMMERCIAL LTR



**BR02**

LIGHT TRUCK (VAN) TYRE



SIZE	PR	Load Index	Speed Rating	Standard Rim	Section Width (mm)	Overall Diameter (mm)	Max.load		Max.pressure	
							kg	lbs	kpa	psi
195R15C	8PR	106/104	R	5.5J	196	693	950/900	2094/1984	450	65
205R16C	8PR	110/108	S	6J	208	736	1060/1000	2336/2204	450	65
155R12C	8PR	88/86	Q	4.5J	157	550	560/530	1235/1168	450	65



Three groups of longitudinal grooves fully display tyres' driving force and enhance gripping ability.



Special tread compound improves wear resistance, meteor-tyre sipes plus dynamic grooves enhance the aesthetic perception of patterns.

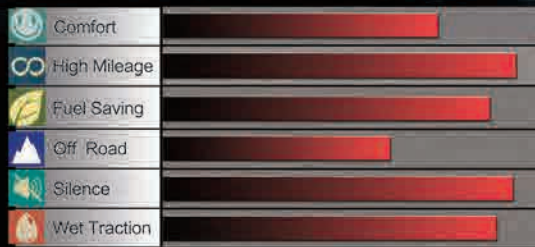


A reasonable design of inner contour and the strengthened material ensure superior bearing capacity of the tyre



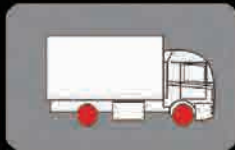
**BR68**

LIGHT TRUCK (VAN) TYRE



COMMERCIAL LTR

COMMERCIAL LTR



Designed for light truck, agricultural vehicles and light dump truck. For all position wheels.



Excellent traction performance

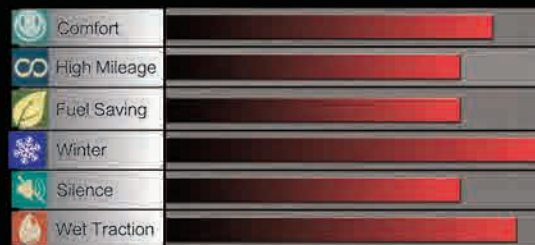


Low heating up shoulder design

SIZE	PR	Load Index	Speed Rating	Standard Rim	Section Width (mm)	Overall Diameter (mm)	Max. load		Max. pressure	
							kg	lbs	kpa	psi
7.00R16LT	10PR	111/107	N	5.5F	200	785	1090/975	2403/2149	560	81



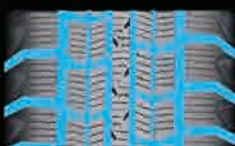
**BS66**  
WINTER TYRE



Special pattern design with high density jag sipes make sure the good grip and brake performance on snow or ice covered road.



Four longitudinal grooves design for excellent water drainage and good handling.



Apply for the computer and gene combination simulation design, have the best pattern noise combination, improve vehicle comfort.

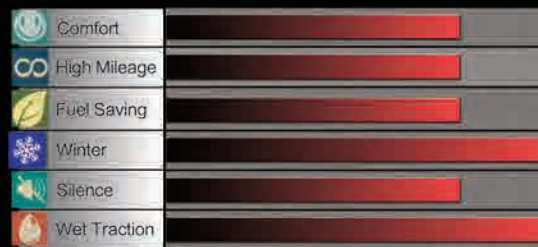
SIZE	Load Index	Speed Rating	Standard Rim	Section Width (mm)	Overall Diameter (mm)	Max.load		Max.pressure	
						Kg	lbs	kpa	psi
155/65R13	73	Q	4.5B	157	532	365	804	300	44
165/70R13	79	Q	5.0B	170	562	437	963	350	51
175/70R13	82	Q	5.0B	177	576	475	1047	300	44
165/60R14	75	S	5.0J	170	554	387	853	300	44
175/65R14	82	Q	5.0J	177	584	475	1047	300	44
175/70R14	84	Q	5.0J	177	602	500	1102	300	44
185/60R14	82	Q	5.5J	189	578	475	1047	350	51
185/65R14	86	S	5.5J	189	596	530	1168	300	44
185/70R14	88	S	5.5J	189	616	560	1234	300	44
195/60R14	86	Q	6.0J	201	590	530	1168	350	51
175/65R15	84	Q	5.0J	177	609	500	1102	300	44
185/60R15	84	S	5.5J	189	603	500	1102	300	44
185/65R15	88	Q	5.5J	189	621	560	1235	350	51
195/55R15	85	Q	6.0J	201	595	515	1135	350	51
195/60R15	88	Q	6.0J	201	615	560	1235	350	51
195/65R15	91	Q	6.0J	201	635	615	1356	350	51
195/70R15C	104/102	Q	6.0J	201	655	900/850	1985/1875	450	65
205/65R15	94	S	6.0J	209	647	670	1477	300	44
215/75R15	100	Q	6.0J	216	703	800	1764	300	44
195/60R16	89	S	6.0J	201	640	580	1278	300	44
205/55R16	91	Q	6.5J	214	632	615	1356	350	51
205/60R16	92	S	6.0J	209	652	630	1388	300	44
215/55R16	93	S	7.0J	226	642	650	1433	300	44
215/60R16	95	Q	6.5J	221	664	690	1521	300	44
215/70R16	100	S	6.5J	221	708	800	1764	300	44
225/70R16	103	S	6.5J	228	722	875	1929	300	44
215/60R17	96	S	6.5J	221	690	710	1567	300	44
225/65R17	102	Q	6.5J	228	724	850	1874	300	44
265/65R17	112	S	8.0J	272	776	1120	2471	300	44
235/60R18	103	Q	7.0J	240	739	875	1929	300	44
185R15C	103/102	Q	5.5J	189	677	875/850	1929/1874	450	65

WINTER



# BS67

STUDDABLE WINTER TYRE



SIZE	Load Index	Speed Rating	Standard Rim	Section Width (mm)	Overall Diameter (mm)	Max.load		Max.pressure	
						kg	lbs	kpa	psi
175/65R14	86	T	5.0J	177	584	530	1168	340	49
195/65R15	95	T	6.0J	201	635	690	1521	340	49
205/55R16	94	T	6.5J	214	632	670	1477	340	49
215/60R16	99	T	6.5J	221	664	775	1709	340	49
215/65R16	102	T	6.5J	221	686	850	1874	340	49
215/70R16	100	T	6.5J	221	708	800	1764	300	44
215/55R17	98	T	7.0J	226	668	750	1653	340	49
225/65R17	106	T	6.5J	228	724	950	2094	340	49



The design of wide and interconnected V-shaped horizontal groove has good snow or water drainage performance and can provide maximum road traction.



Adding studs on the tread can make driving safer, and the raised design around the stud holes can isolate snow and make the nail heads fully function.



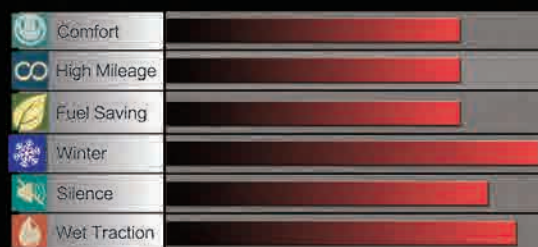
The tread compound adopts snow-specific formula technology, which reduces the low-temperature hardness of the rubber, increases the contact area between the tire and the ground, and improves the grip of the tire.

WINTER

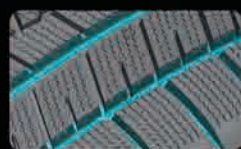
WINTER



**BS68**  
WINTER TYRE



Special pattern design with high density sawtooth lateral groove, - make sure excellent grip and brake performance on snow or ice covered road.



Wider pattern design on inner side of shouder to achieve better traction on snow road.



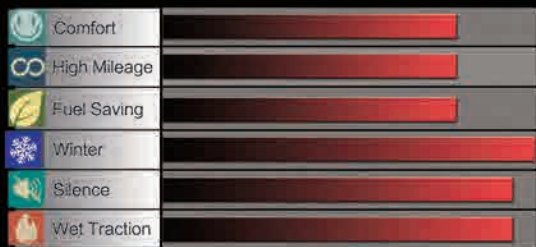
With hundreds of tiny grooves on the tread, fabulous ability to absorb water to refrain aquaplaning.

SIZE	Load Index	Speed Rating	Standard Rim	Section Width (mm)	Overall Diameter (mm)	Max.load		Max.pressure	
						kg	lbs	kpa	psi
205/65R16	95	T	6.0J	209	672	690	1521	300	44
225/55R16	95	T	7.0J	233	654	690	1521	300	44
205/50R17	93	H	6.5J	214	638	650	1433	340	49
205/55R17	95	T	6.5J	214	658	690	1521	340	49
215/45R17	91	H	7.0J	213	626	615	1356	340	49
215/50R17	95	H	7.0J	226	648	690	1521	340	49
215/55R17	94	T	7.0J	226	668	670	1477	300	44
225/45R17	94	H	7.5J	225	634	670	1477	340	49
225/50R17	94	T	7.0J	233	658	670	1477	300	44
225/55R17	97	H	7.0J	233	680	730	1609	300	44
235/45R17	97	S	8.0J	236	644	730	1609	340	49
235/55R17	99	S	7.5J	245	690	775	1708	300	44
215/50R18	92	T	7.0J	226	673	630	1389	300	44
215/55R18	99	H	7.0J	226	693	775	1708	340	49
225/40R18	92	H	8.0J	230	637	630	1389	340	49
225/45R18	95	H	7.5J	225	659	690	1521	340	49
225/50R18	99	H	7.0J	233	683	775	1709	340	49
235/45R18	98	T	8.0J	236	669	750	1653	340	49
235/50R18	101	H	7.5J	245	693	825	1819	340	49
235/55R18	100	H	7.5J	245	715	800	1764	300	44
245/40R18	97	H	8.5J	248	653	730	1609	340	49
245/45R18	96	S	8.0J	243	677	710	1565	300	44
245/50R18	104	H	7.5J	253	703	900	1984	340	49
255/40R18	99	S	9.0J	260	661	775	1709	340	49
255/45R18	103	T	8.5J	255	713	875	1929	340	49

WINTER

WINTER

**WD69**  
WINTER TYRE



Multiple combination of pattern groove designing, enhance grip ability, safeguard the driving in winter.



Special pattern design with high density sawtooth lateral groove, - make sure excellent grip and brake performance on snow or ice covered road.



Brand new 3D pattern designing, 20% more space inside of the groove, enhanced mutual support between pattern blocks, better grip performance.

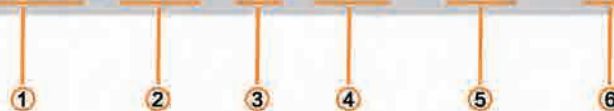
SIZE	Load Index	Speed Rating	Standard Rim	Section Width (mm)	Overall Diameter (mm)	Max. load		Max. pressure	
						kg	lbs	kpa	psi
215/65R16	98	S	6.5J	221	686	750	1653	300	44
235/70R16	106	S	7.0J	240	736	950	2094	300	44
265/70R16	112	T	8.0J	272	778	1120	2469	300	44
215/65R17	99	T	6.5J	221	712	775	1709	300	44
225/60R17	99	S	6.5J	228	702	775	1709	300	44
235/65R17	104	T	7.0J	240	738	900	1984	300	44
245/65R17	107	S	7.0J	248	750	975	2149	300	44
255/60R18	112	T	7.5J	260	763	1120	2469	340	49
225/55R18	98	S	7.0J	233	705	750	1653	300	44
225/55R19	99	T	7.0J	233	731	775	1709	300	44
225/60R18	100	S	6.5J	228	727	800	1764	300	44
235/65R18	106	T	7.0J	240	763	950	2094	300	44
245/60R18	105	T	7.0J	248	751	925	2039	300	44
265/60R18	110	R	8.0J	272	775	1060	2337	300	44
225/45R19	96	T	7.5J	225	685	710	1565	340	49
235/50R19	99	T	7.5J	245	719	775	1708	300	44
235/55R19	101	T	7.5J	245	741	825	1819	300	44
245/45R19	102	T	8.0J	243	703	850	1874	340	49
245/55R19	103	R	7.5J	253	753	875	1929	300	44
255/40R19	100	T	9.0J	260	687	800	1764	340	49
255/45R19	100	T	8.5J	255	713	800	1764	300	44
255/55R19	107	T	8.0J	265	763	975	2150	300	44
265/50R19	110	T	8.5J	277	749	1060	2337	340	49
275/40R19	105	T	9.5J	278	703	925	2039	340	49
235/55R20	102	T	7.5J	245	766	850	1874	300	44
245/45R20	103	T	8.0J	243	728	875	1929	340	49
245/50R20	102	T	7.5J	253	754	850	1874	300	44
255/50R20	109	S	8.0J	265	764	1030	2271	340	49
275/45R20	106	S	9.0J	273	756	950	2094	300	44
275/55R20	117	S	8.5J	284	810	1285	2833	340	49
285/50R20	112	S	9.0J	297	794	1120	2469	300	44
255/45R21	105	T	8.5J	255	763	925	2039	340	49
275/45R21	110	T	9.0J	273	781	1060	2337	340	49
275/40R22	107	T	9.5J	278	779	975	2149	340	49
255/45R20	105	T	8.5J	255	738	925	2039	340	49
245/70R16	107	S	7.0J	248	750	975	2149	300	44

WINTER

WINTER

**TYRE SIZE KNOWLEDGE**

**205/55 R 16 91 W**

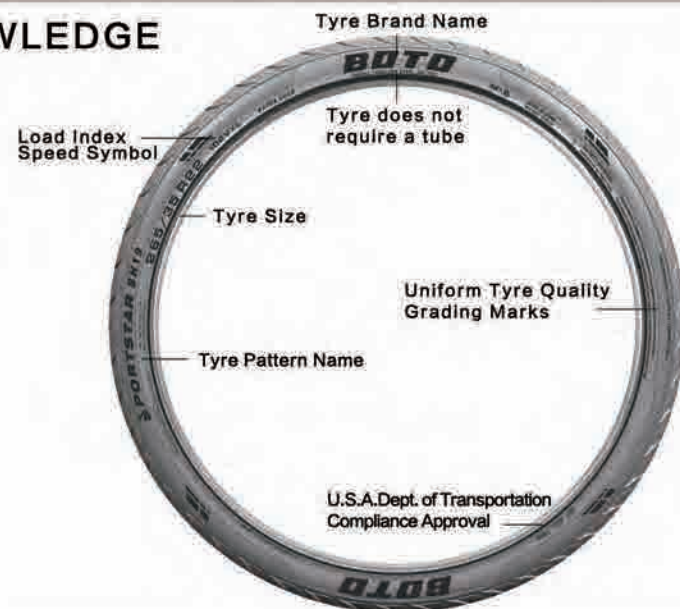


- ① Nominal Section Width (mm)
- ② Nominal Aspect Ratio as a Percentage
- ③ Radial Construction
- ④ Nominal Rim Diameter in Inches
- ⑤ Load Index
- ⑥ Speed Symbol

Aspect ratio(%) =  $\frac{\text{Section Height}}{\text{Section Width}} \times 100$



**SIDEWALL KNOWLEDGE**



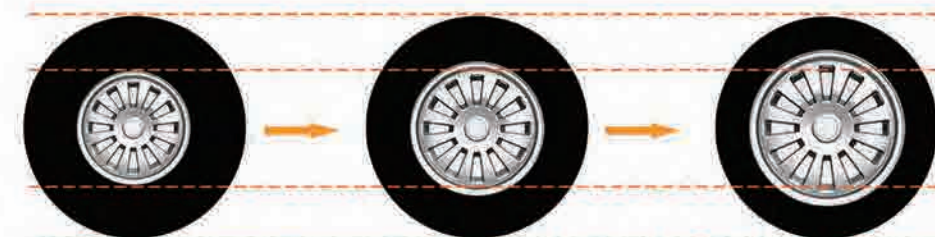
**SPEED RATING**

Speed Rating	Max.Kph
M	130KM/H
N	140KM/H
P	150KM/H
S	180KM/H
T	190KM/H

Speed Rating	Max.Kph
H	210KM/H
V	240KM/H
W	270KM/H
Y	300KM/H
Z	240KM/H+

**TYRE UPGRADE**

Tyre Upgrade means: increase of rim diameter without changing of tyre overall diameter, the trend in development of low aspect ratio is called upgrade

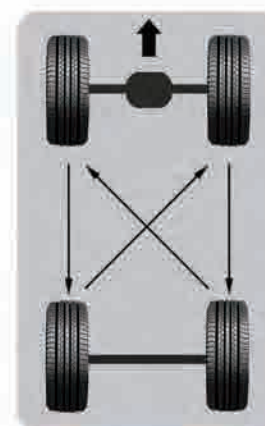


Please refer to the clarifications set forth below to upgrade the tyre:

Without any particular reason, please do not change the overall diameter of tyre easily. The alternation of tyre overall diameter will cause misreading of speedometer or mutual interference between tyre and other parts of vehicle. Please determine the width of tyre in accordance with the specific width of vehicle. If the width of the entire tyre is increased overly, it will cause mutual interference between tyre and other parts of vehicle, even heading out of the tyre from bodywork which will initiate danger. Notice the load index of vehicle when you upgrade the tyre. there is rule to the weight which the tyre bear (load index) for each size. Please refer to the load index when you chose the proper size.

**TYRE ROTATION**

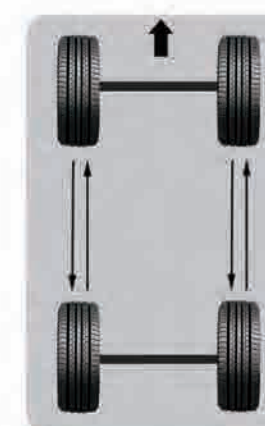
The purpose for rotating tyres is to achieve a more uniform wear for all tyres on a vehicle. Before rotating tyres, determine the cause of any unusual wear and correct any misalignment, imbalance, or other mechanical problems. Otherwise it will cause: 1. Ride disturbing; 2. More noise; 3. Poor ride comfort; 4. Shorter of life span.



Front Wheel Drive



Rear Wheel Drive



4 Tyre Rotation